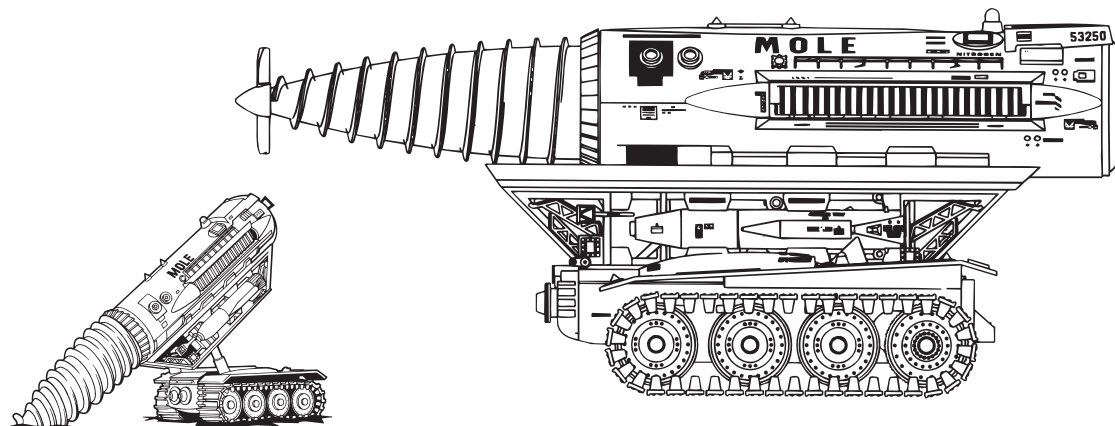


AiP10007

1/72 SCALE THE MOLE



Paint colour references:

We recommend using the following Humbrol paint colours:
(Paints not included)

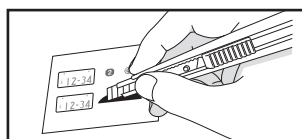
- 11** SILVER
- 33** MATT BLACK
- 53** GUNMETAL
- 60** MATT SCARLET
- 77** MATT NAVY BLUE
- 154** MATT INSIGNIA YELLOW
- 27003** POLISHED STEEL

The original Thunderbirds television series was produced in a time before CGI and computers. Skilled model makers and technicians created several models in varying scales depending on the shot required in the storyline. This coupled with camera lighting from different angles means the various craft do appear to be different colours in certain scenes. The paint codes provided are a basic guide and we would suggest watching the episodes and referring to the box photo for further detailed information.

How to apply decals:

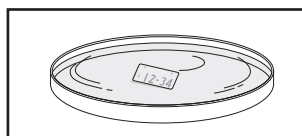
Waterslide decals are supplied with this model kit.
Please follow these instructions when applying.

①



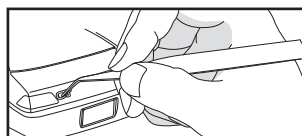
- Cut out the decal to the required shape using scissors or a craft blade.

②



- Dip the decal in water for 10 to 20 seconds.

③



- Place decal in the desired position and slide it gently from the backing sheet using tweezers
- Adjust position if required and dry excess water with a soft cloth.

You will also need: (not included)



Plastic Cement



Super Glue



Sprue Nipper



Craft Knife



Tweezers

Symbol guide:

— Glue here

- - - - No glue required



ADVENTURES IN PLASTIC
A Bachmann Europe Production

13 Moat Way, Barwell, Leicestershire, LE9 8EY
01455 841756 • www.bachmann-europe.co.uk

Thunderbirds™ and © ITC Entertainment Group Limited 1964, 1999 and 2020. Licensed by ITV Ventures Limited. All rights reserved. © Bachmann Europe Plc 2019.



Carefully check the contents of the kit, including parts and decals, before assembly.

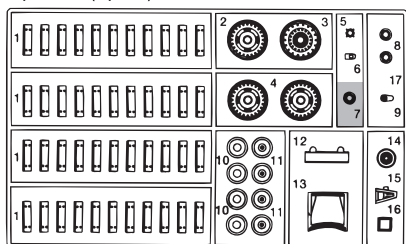
PARTS LIST



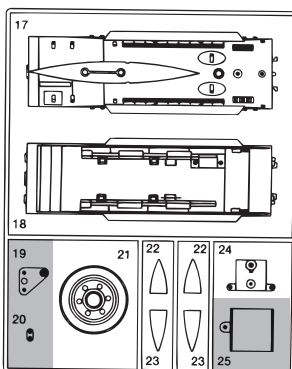
Parts not required

This kit does not include paints or glue. Please purchase them separately.

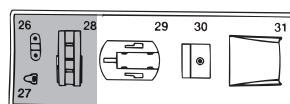
Sprue A (2pcs.)



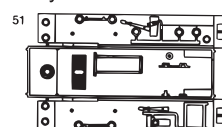
Sprue B



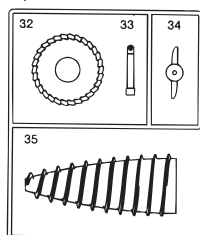
Sprue C



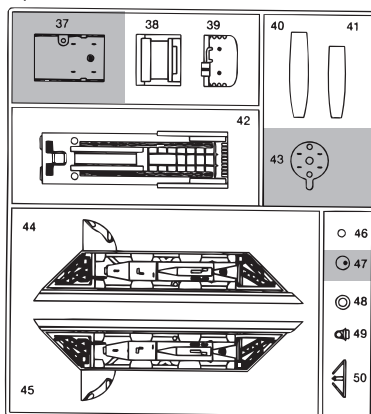
Body



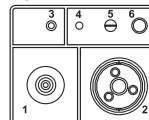
Sprue D



Sprue E



Sprue F



Decal Sheet



Bag MA

MA-3 Washers (small)	2	⊙
MA-4 Set Screw M2×4	2	⌘
MA-5 Tapping Screw M2×6	4	⌘

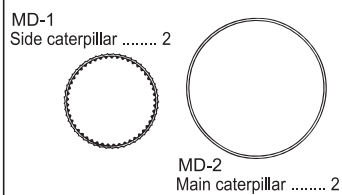
Bag MC

MC-1 Rivet 2×15	1	⌘
MC-2 Round shaft Ø1.5×30	1	⌘
MC-3 Round shaft Ø2×58	2	⌘
MC-4 Tapping screw M2.6×8	2	⌘
MC-5 Set screw M2×16	1	⌘

Bag MB

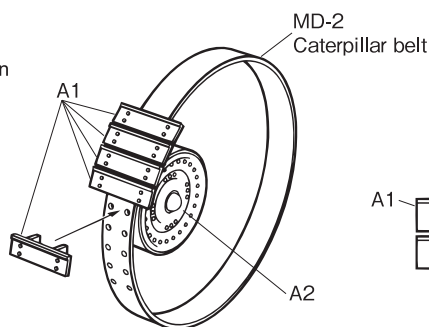
MB-1 Rivet 2×10	10	⌘
MB-2 Spring	2	⌘

Bag MD



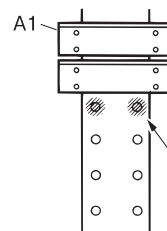
1 Main caterpillar tracks

- Ensure holes in belt are all clear
- Roughen belt with sandpaper for better adhesion
- Use **Superglue** (not supplied)
- Ensure all track pieces are attached in the same direction
- 42 track plates per belt
- Assemble 2 identical belts



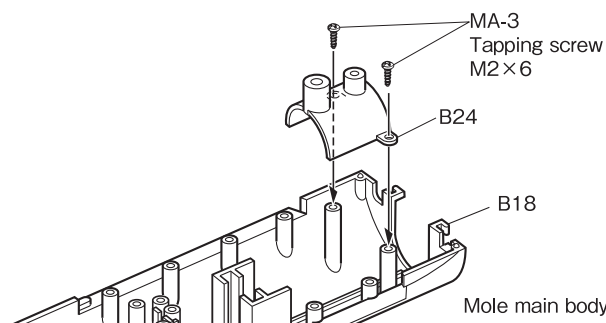
We recommend colour **53** for the caterpillar parts A1 (Not rubber belt)

Paint prior to assembly



Apply Superglue sparingly to the rubber side of the belt around the holes.

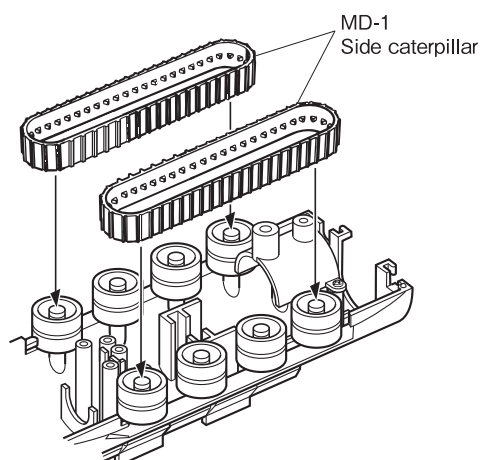
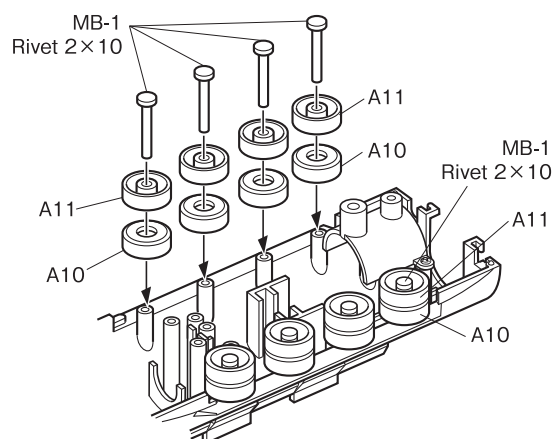
2 Lower Mole assembly



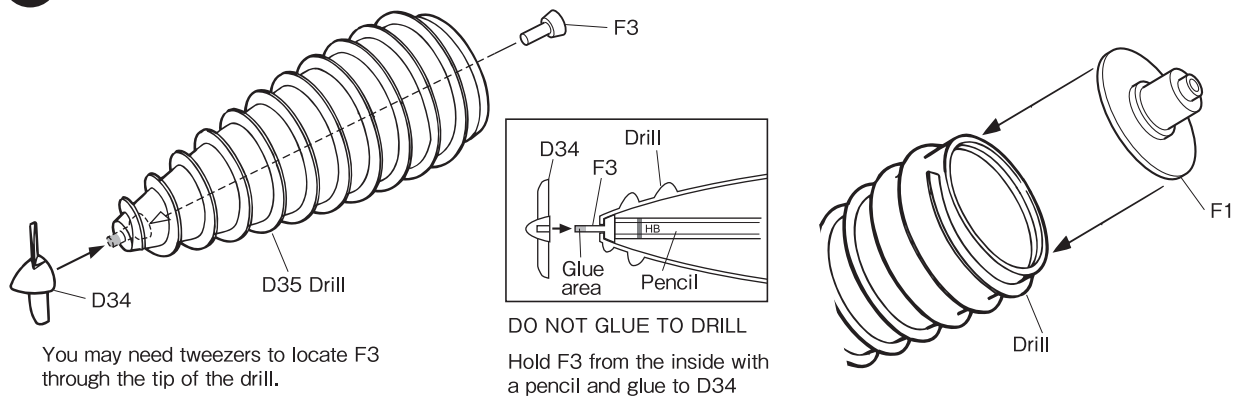
Mole main body colour: **154**

3 Side caterpillar assembly

Glue A10 and A11.
Attach to B18 with Rivets to ensure smooth rotation.

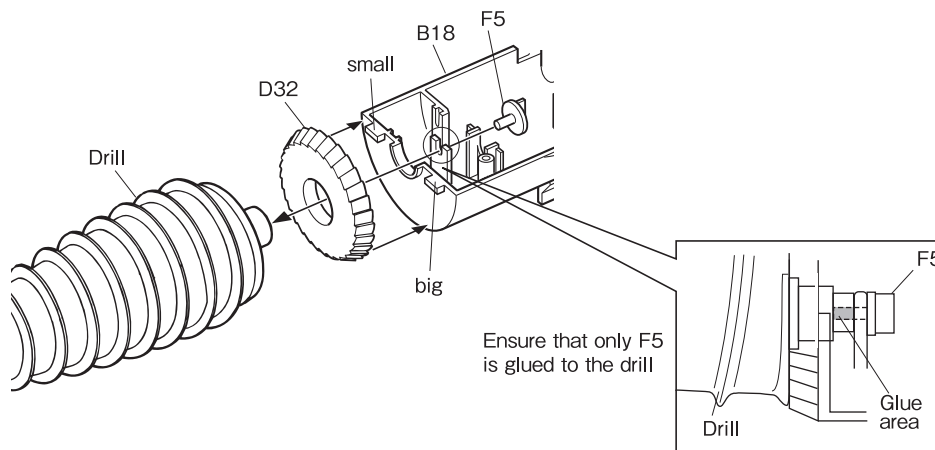


4 Drill assembly



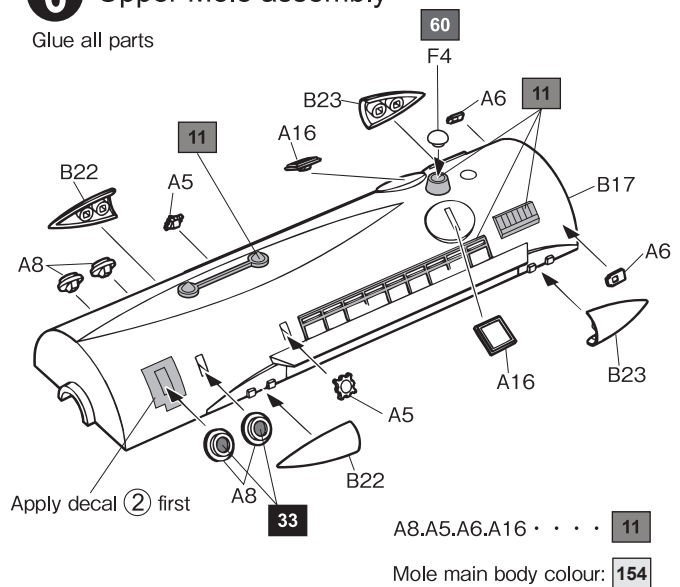
5 Drill installation

Attach D32 to B18 first.



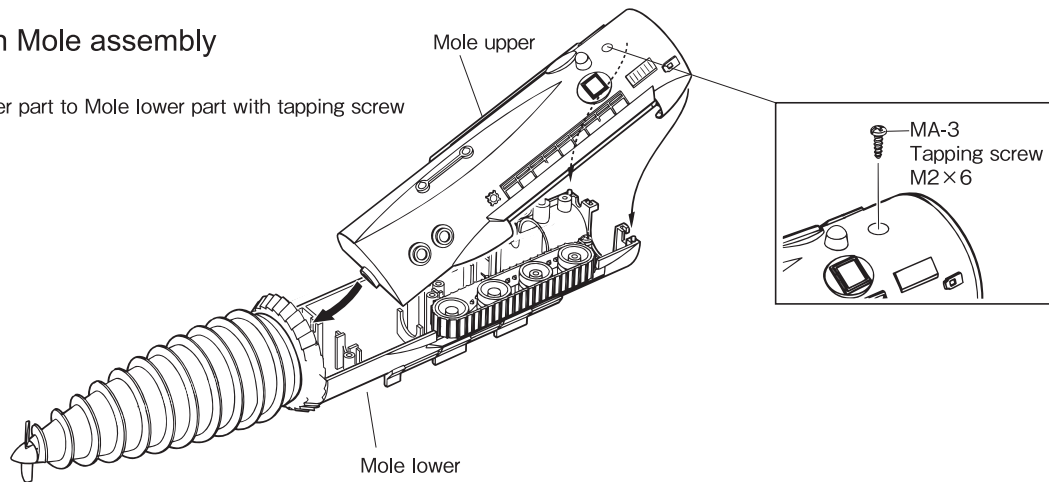
6 Upper Mole assembly

Glue all parts



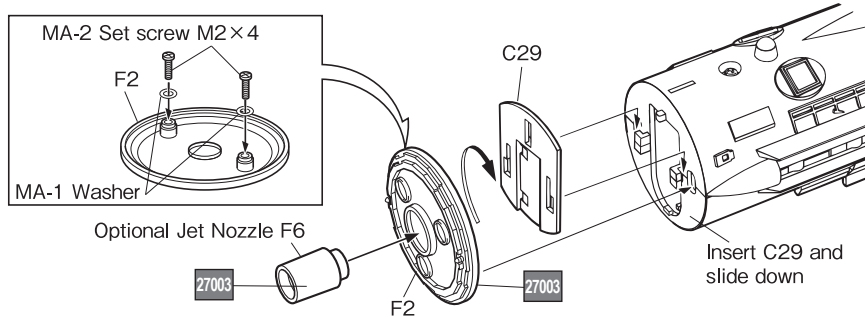
7 Main Mole assembly

Fit Mole upper part to Mole lower part with tapping screw

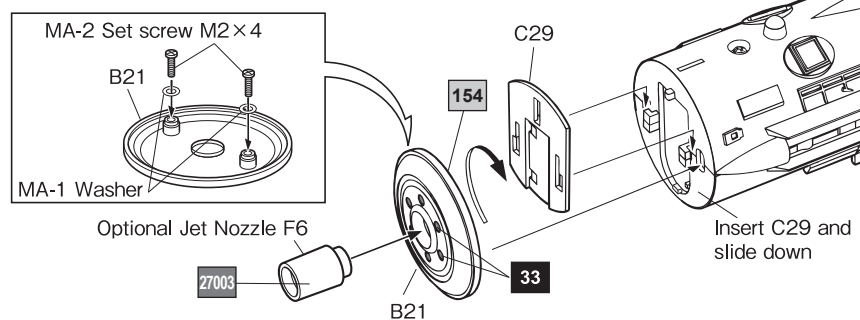


8 Parts are supplied for two versions of The Mole, serial nos 56156 and 53250. Choose the end cap F2 or B21. Fit Jet Nozzle F6 for Mole in drilling position.

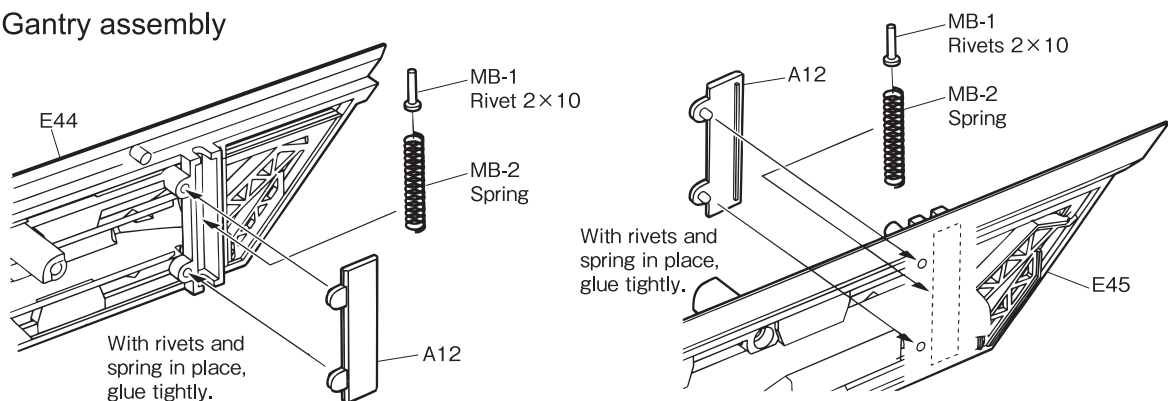
Option 1: Serial No. 56156



Option 2: Serial No. 53250

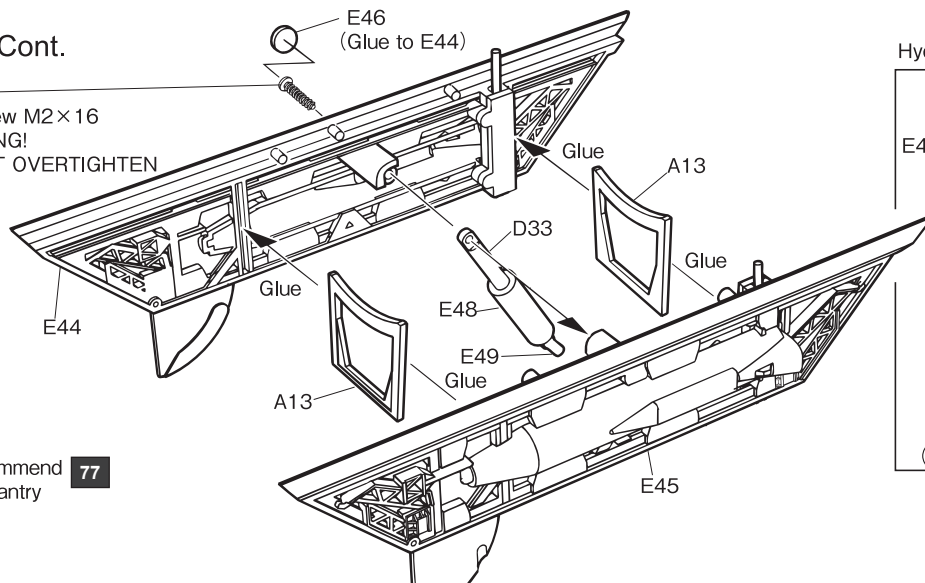


9 Gantry assembly

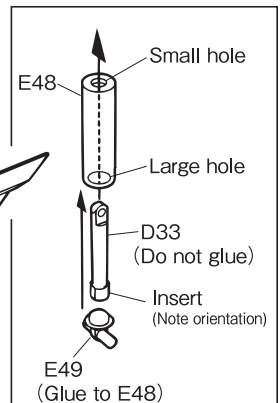


9 Cont.

MC-5
Set screw M2×16
WARNING!
DO NOT OVERTIGHTEN



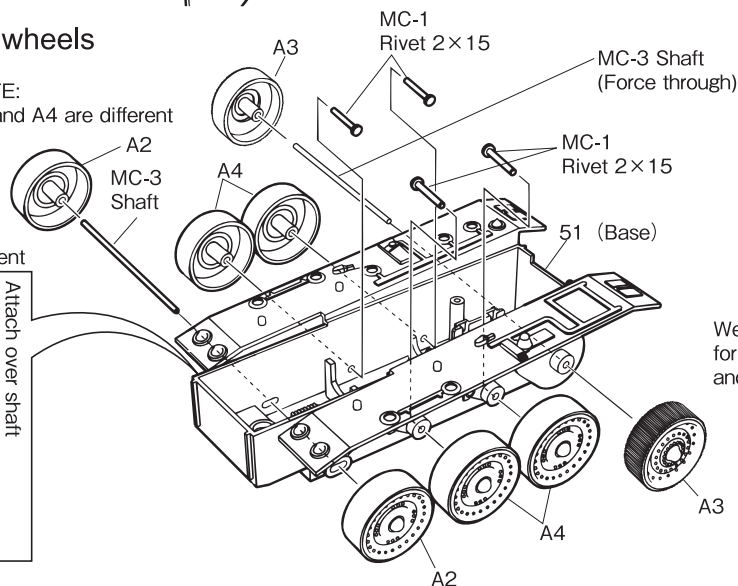
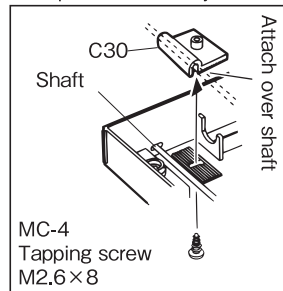
Hydraulic cylinder assembly



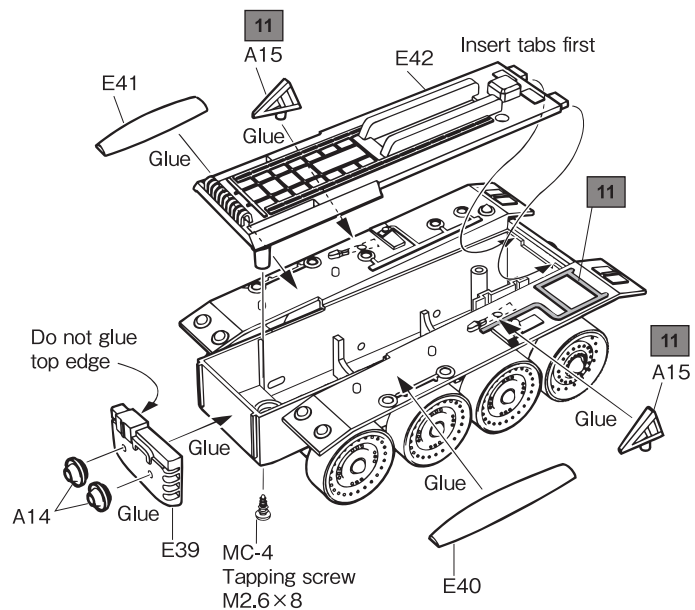
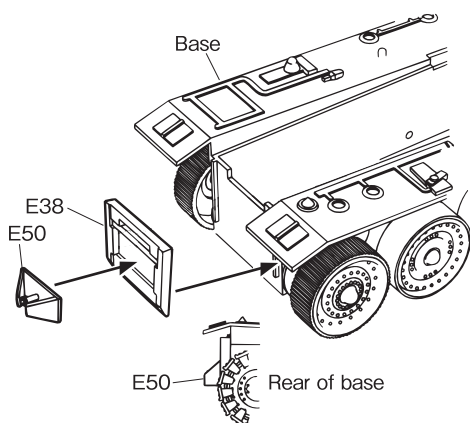
10 Assembling base wheels

NOTE:
A2 and A4 are different

Caterpillar tension adjustment

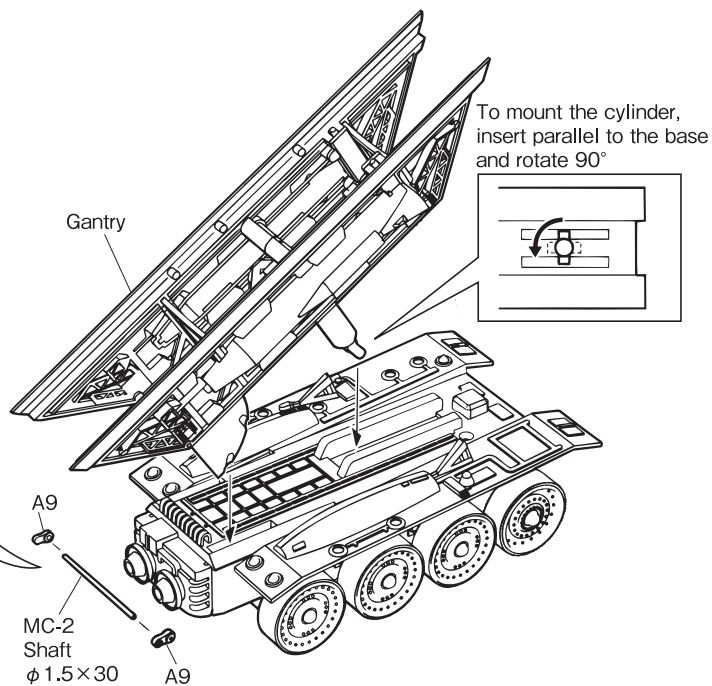
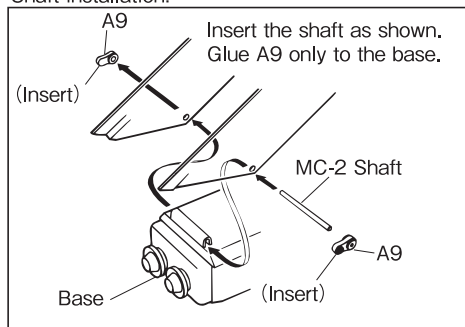


11 Base assembly



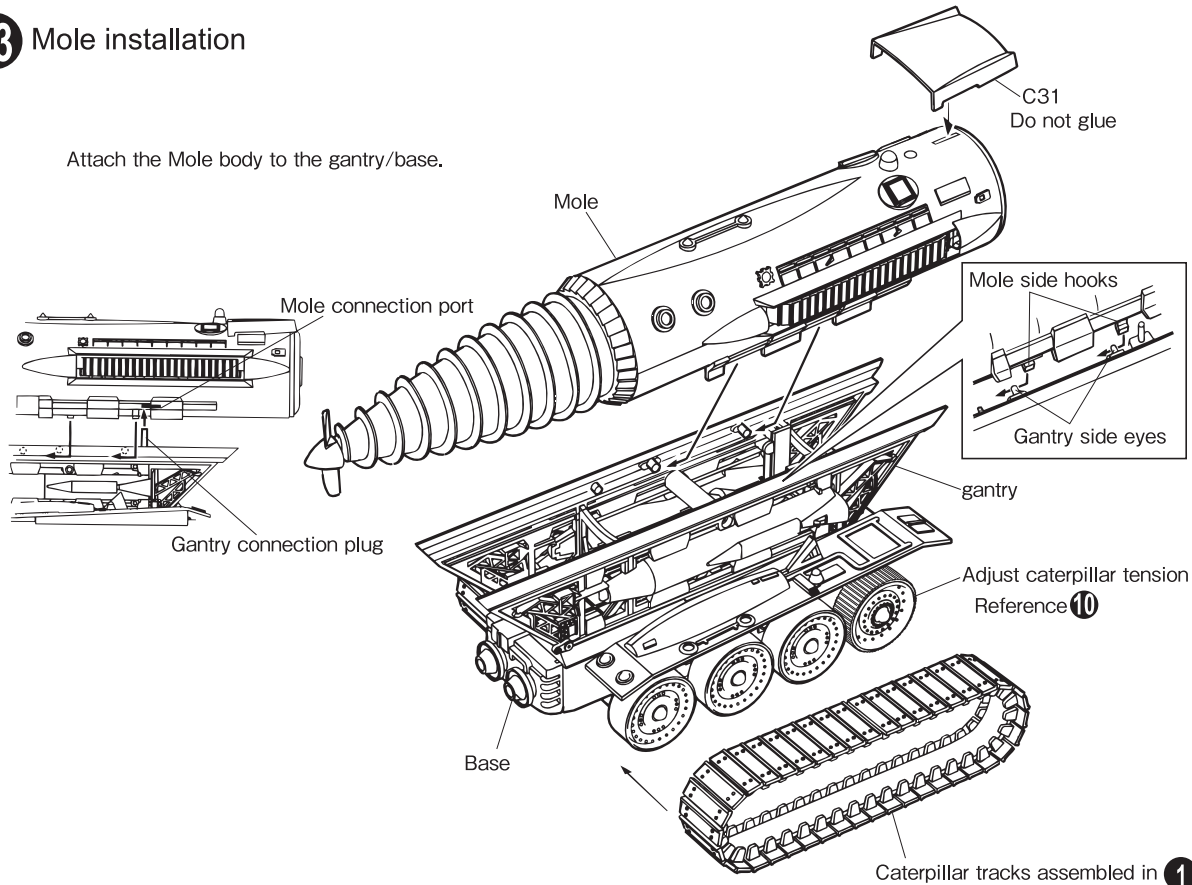
12 Mounting the gantry

Shaft installation:



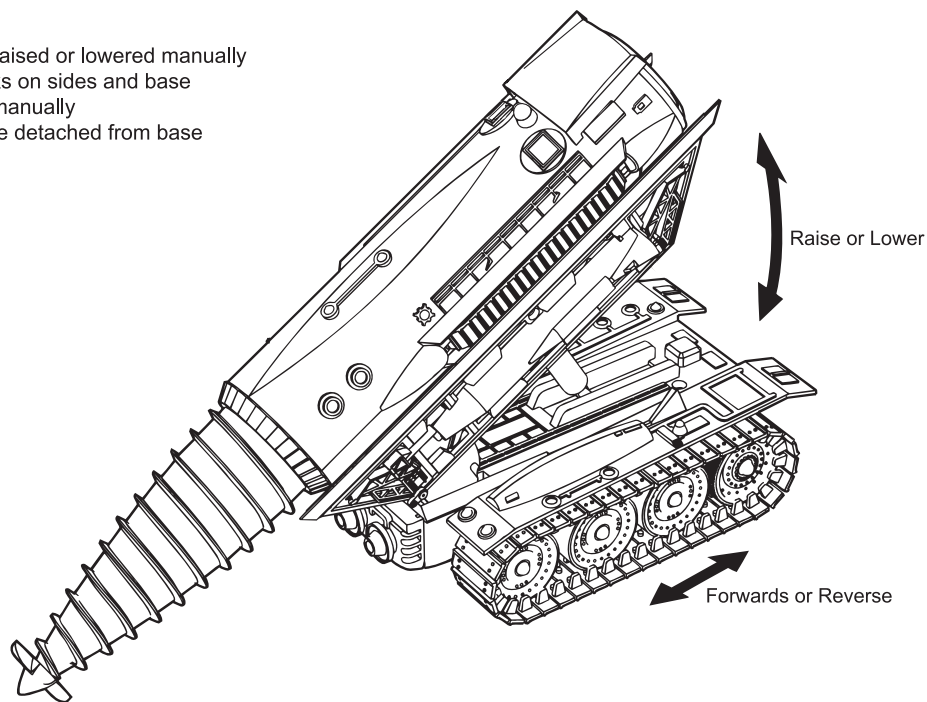
13 Mole installation

Attach the Mole body to the gantry/base.



14 Completed Model

- Gantry can be raised or lowered manually
- Caterpillar tracks on sides and base can be moved manually
- Mole unit can be detached from base



15 Decal placement

* Decals are supplied for two versions of the Mole:

(16) Serial No. 56156 as seen in "Pit of Peril"

(14) Serial No. 53250 as seen in "City of Fire"
"The Duchess Assignment"
"Cry Wolf"

