

LS-035 Engine House Kit

PROSES

w/Motorized Working Doors



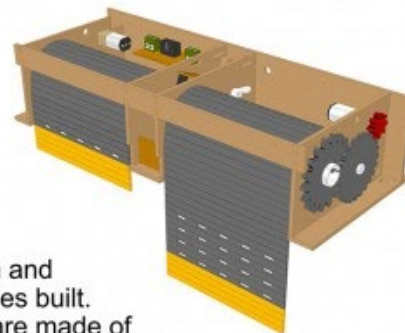
Kit comes unpainted.

Dimensions: 60X28X20cm (23.6"X11"X7.9")

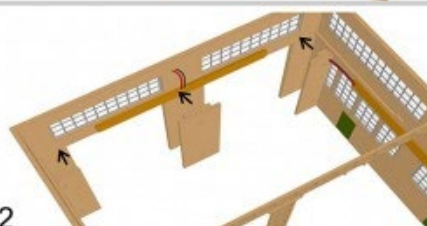
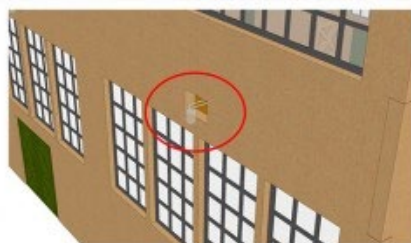
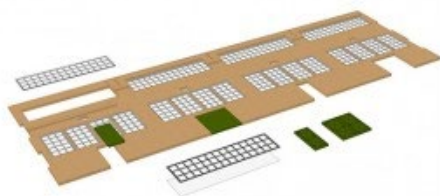
Made of laser-cut MDF, acrylic, plastik, etc. materials.

Needs assembly, painting and a power supply of 12 Volts, 1 Amps.

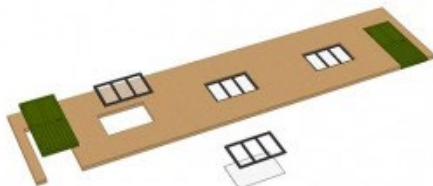
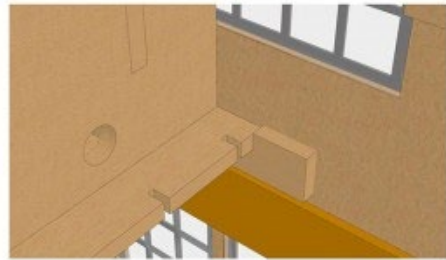
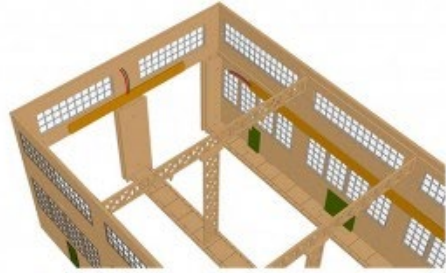
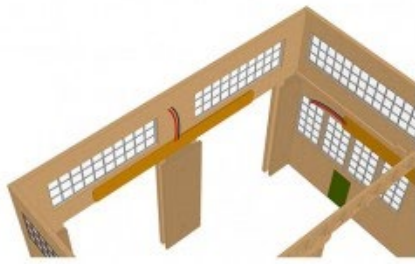
Best is to paint all parts in advance, before gluing.

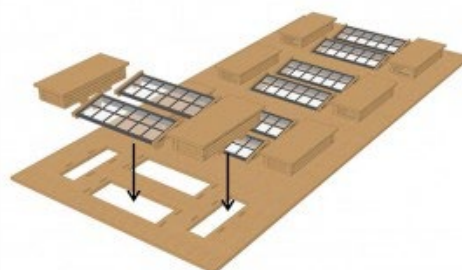
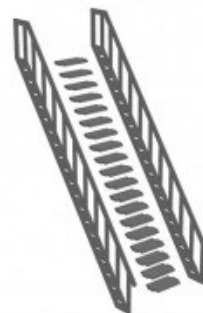


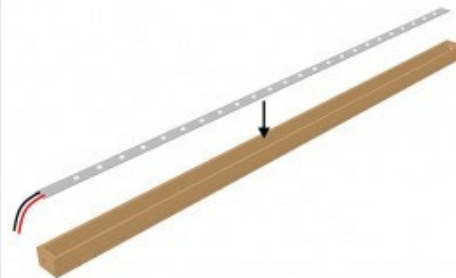
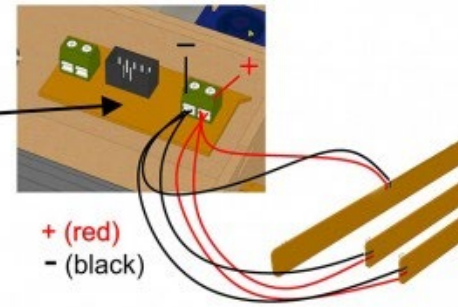
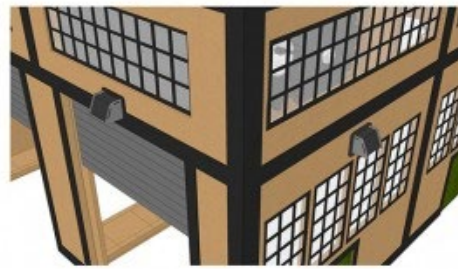
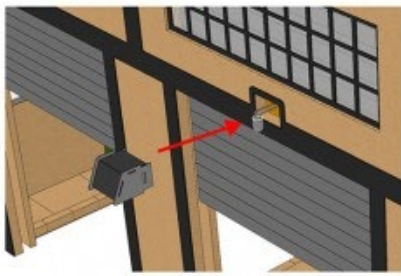
Motor mechanism and control panel comes built.
Roller door slats are made of 1mm thick gray acrylic (Plexiglass).



2







How to embed tracks at ground level.

Cut strips of wood according to the height and width of your track.
Prepare a base for the engine house as below.
Place the engine house on the base.

