



# Class 47 Diesel Locomotive

Thank you for your choice of the Bachmann Branchline Class 47 diesel locomotive.

### General

The mechanism of this model requires running in (without a load) for approximately 1 hour in each direction at moderate speed to allow the gear train to bed in.

Bachmann Branchline locomotives are not suitable for use on track tighter than second radius (approx. 18 inches).

### Body removal

Remove the screws indicated 'A' beside the bogies and unclip by each cab door, indicated 'B'. (note diagram shows bogies removed only for clarity)

### DCC Decoder fitting to non DCC fitted loco

This model has a 21-pin interface for a decoder with an appropriate fitting. An adapter is available from retailers to use a decoder with an 8-pin plug in the model. (item L38004 / 36-559)

► It is recommended that the running in as above be carried out using a DC power supply before moving on to fit a DCC decoder

► If this is a 'DCC Onboard' or 'DCC Sound' model please also refer the accompanying DCC instruction sheet.

### Lights

When the locomotive is fitted with a DCC decoder the lights can be turned on/off with these handset keys:  
F0 (F10 on EZ Command) Directional head and tail lights

The **tail lights** can be separately turned off using the switch beneath the fuel/water tank

### Lubrication

When required, sparingly lubricate the motor bearings using plastic compatible light oil and the gear train with model grease as indicated on the diagram.

### Bufferbeam parts

The locomotive dummy screw coupling and the brake and steam pipes fit as shown on the diagram. The pipes are not suitable for use with the functional coupler on tight curves.

► The model should be handled carefully as it has many finely detailed parts. It is not suitable for persons under 14 years.

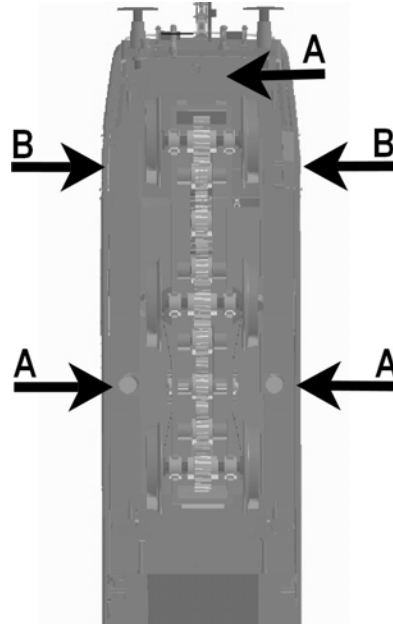
Bachmann Europe Plc

Moat Way, Barwell, Leicestershire, LE9 8EY

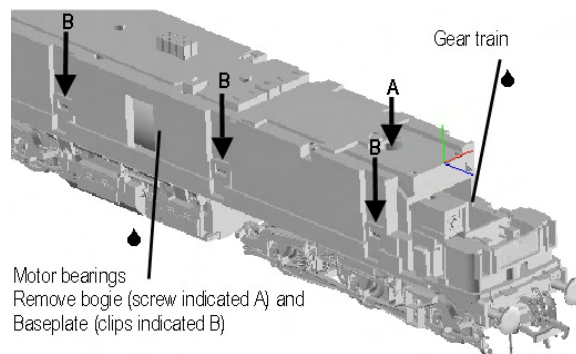
01455 841756

www.bachmann.co.uk

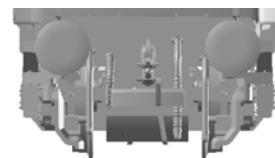
### Location of body fixing screws and clips



### Lubrication points



### Bufferbeam parts



1 2 3 4 5 6

1. Airbrake hose	2. Vacuum pipe
3. Coupling	4. Steam heat pipe
5. Airbrake hose	6. ETH connector (if fitted)



## Class 47 Diesel Locomotive

### Replacement Parts

- 1 800-006 motor
- 2 800-008 PCB
- 3 800-010 motor bracket
- 4 800-009 driveshaft
- 5 800-013 underframe
- 6 800-013 bogie tower top
- 7 800-032 driving wheels
- 8 800-022 bogie
- 9 BL2007 drive cup
- 10 800-030 bogie frame
- 11 800-020 gear set
- 13 BL1998 coupling
- 14 800-015 LED board
- 15 800-014 buffer beam pack

When ordering parts please quote the catalogue number together with the livery of the model (if appropriate) and number of the part required.

Parts are subject to availability.

Packets of couplers (item 36-030) suitable for this model are available from retailers

